

MEASURES OF STUDENT PROGRESS AND OUTCOMES: UNIVERSITY PARTICIPATION (2003-04 TO 2012-13)

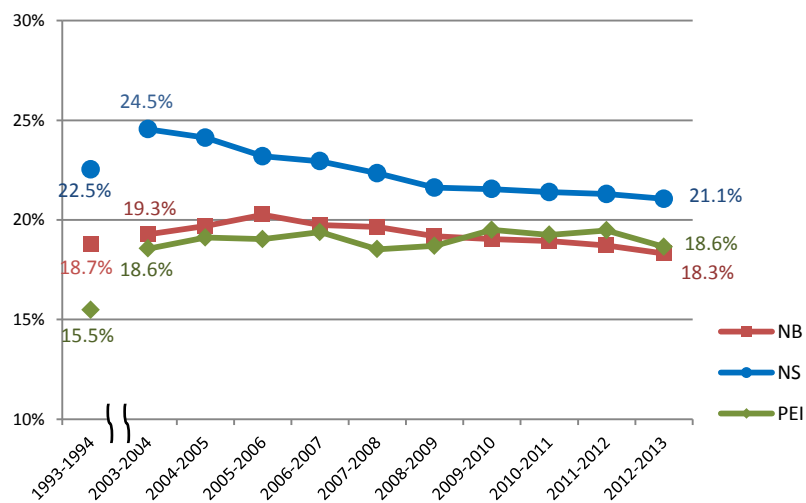
STATISTICAL TABLES HIGHLIGHTS

Home Province Participation

Over the past 10 years, home province participation rates have been weakening in Nova Scotia and New Brunswick, while remaining relatively stable in Prince Edward Island.

- In New Brunswick, home province participation was the highest in 2005-06, reaching 20.3%. Between 2005-06 and 2012-13, it steadily declined to 18.3%, decreasing by two percentage points over 7 years.
- In Nova Scotia, home province participation peaked in 2002-03 at 24.6% (data point not shown), and has since declined more than three percentage points to 21.1% reaching the lowest point in the last 20 years. Despite the biggest decline among the three Maritime provinces, home province participation rates in Nova Scotia remain higher than in New Brunswick and Prince Edward Island.
- In Prince Edward Island, home province participation has remained relatively stable for the past 10 years fluctuating around 19± 0.5%, and significantly higher than it was throughout 1990's.

Figure 1: Number of students enrolled full-time in their home province divided by the provincial population aged 18-24 (ref: Table 1).



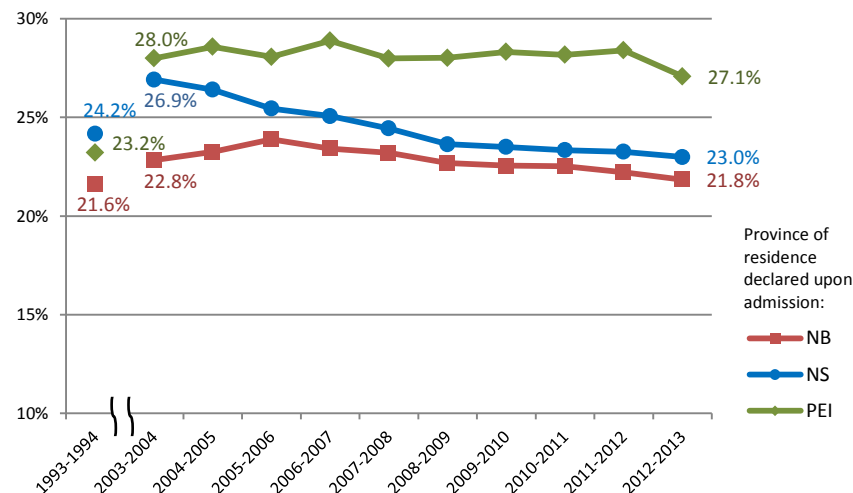
Source: MPHEC PSIS, StatCan CANSIM Table 051-0001

Maritime Participation of Residents

The trends in participation of provincial residents at universities anywhere in the region vary by province.

- Maritime participation trends among New Brunswick and Nova Scotia residents closely follow their respective home province participation trends, and both show a gradual decline since 2005-2006. New Brunswick residents are more likely to attend university outside their home province than Nova Scotia residents. The gap in university participation within the Maritimes between the two provinces has been hovering around one percentage point in recent years, compared to four percentage points ten years ago.
- Prince Edward Island residents consistently show the highest level of university participation within the Maritimes: during the past 10 years, approximately 28±0.9% of Islanders aged 18-24 were enrolled in a university within the region dropping to 27.1% by 2012-13. Twenty years ago, it stood four percentage points lower, at 23.2%.

Figure 2: Number of provincial residents enrolled full-time in any Maritime university divided by the provincial population aged 18-24 (ref: Table 2).



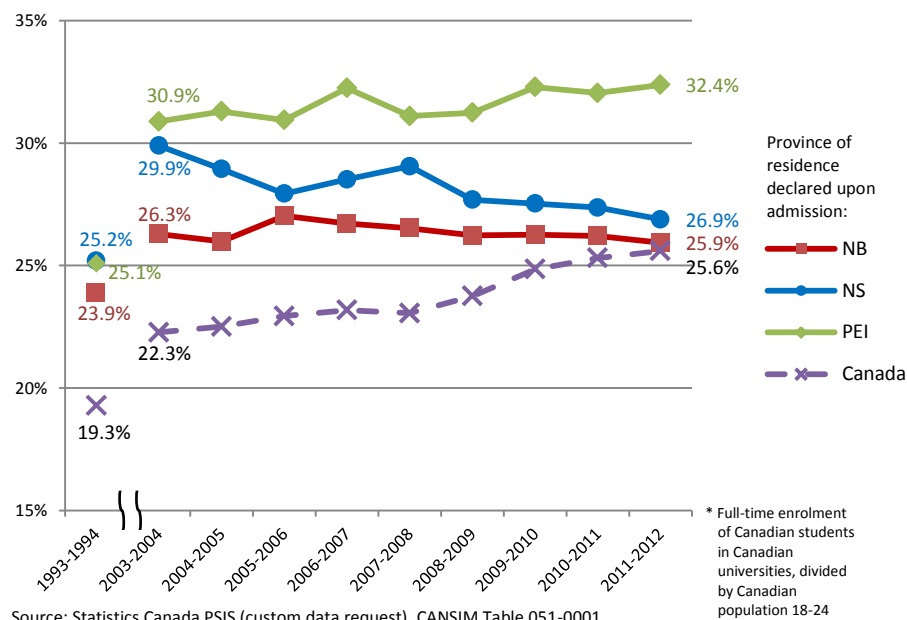
Source: MPHEC PSIS, StatCan CANSIM Table 051-0001

National Participation of Maritimers

Historically, residents (aged 18-24) of all three Maritime provinces recorded university participation rates well above the national rate. However, the university participation rate for Canada as a whole has been steadily increasing, and the gap between the national rate and New Brunswick's and Nova Scotia's residents has narrowed considerably.

- In New Brunswick, home province participation declined by 1.6 percentage points between 2005-2006 and 2011-2012, whereas participation nationally declined by 1.1 percentage points.
- In Nova Scotia, home province participation declined steadily between 2003-2004 and 2011-2012 (down 3.2 percentage points), whereas national participation of NS residents declined by 3.0 percentage point.
- In Prince Edward Island, home province participation increased by 0.9 percentage points between 2003-2004 and 2011-2012, whereas national participation increased by 1.5 percentage points.

Figure 3: Number of provincial residents enrolled full-time in a Canadian university divided by the provincial population aged 18-24 (ref: Table 3).



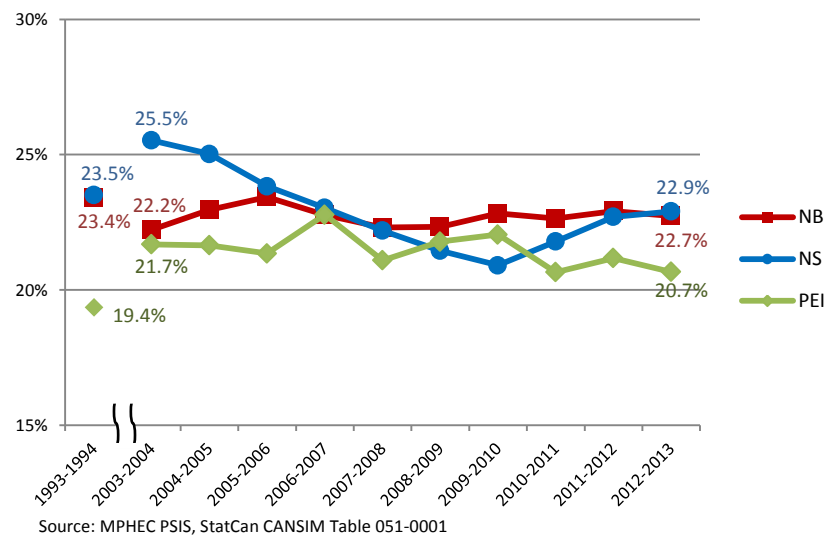
Source: Statistics Canada PSIS (custom data request), CANSIM Table 051-0001

Home Province Participation by Age Cohort (18-19 year olds)

Home province participation rates among 18-19 year olds (i.e., recent high school graduates) show a different dynamic from the general home province participation:

- In Nova Scotia, home province participation among 18-19 year olds peaked in 2002-2003 at 25.7% (data point not shown), followed by a decline to 20.9% in 2009-2010 – the lowest point since 1990. In the two years that follow, home province participation among 18-19 year old Nova Scotians began to recover, although the recovery may be leveling off in 2012-2013.
- In New Brunswick, home province participation in this age group has remained largely stable over the past 10 years, fluctuating around 22.5%. It peaked in 2005-2006, reaching 23.4%, and then declined slightly in the following two years. Unlike in Nova Scotia, this potential downward trend stopped in 2007-2008, followed by several years of stable demand.
- In Prince Edward Island, home province participation among 18-19 year olds shows a slight downward trend, decreasing by 1 percentage point over 10 years. However, the population of 18-19 year olds in PEI is relatively small, and the observed fluctuations in participation rates may be partially attributed to the low sample size.

Figure 4: Number of 18-19 year old students enrolled full-time in their home province divided by the provincial population aged 18-19 (ref: Table 6).



Source: MPHEC PSIS, StatCan CANSIM Table 051-0001

MEASURES OF STUDENT PROGRESS AND OUTCOMES: UNIVERSITY PARTICIPATION (2003-04 TO 2012-13)

STATISTICAL TABLES

LIST OF TABLES

Table 1: Home Province Participation.....	4
Table 2: Maritime Participation of Residents	5
Table 3: National Participation of Maritimers	6
Table 4: Home Province 18-24 Participation	7
Table 5: Home Province 18-24 Participation by Gender	8
Table 6: Home Province Participation by Age Cohort	9
Table 7: Direct Entry Rate of Resident High School Students.....	11
Table 8: Overall Participation	12
Table 9: Home Province Full and Part-Time Participation.....	13
Table 10: Maritime Full and Part-Time Participation of Residents	14
Table 11: Overall Full and Part-Time Participation	15

TABLE 1: HOME PROVINCE PARTICIPATION

Number of *students enrolled full-time in their home province* divided by the provincial population aged 18-24.

What this Measure tells us: This definition provides one measure of the extent to which a province’s typical university-aged population engages in university education within their own province. The numerator includes all full-time students from the province. This is to enable comparisons with the National Participation of Maritimers, where age group is not universally available for the source used for the Canadian statistics.

	New Brunswick			Nova Scotia			Prince Edward Island		
	Full-Time Home Province Enrolment	Population 18-24	Home Province Participation Rate	Full-Time Home Province Enrolment	Population 18-24	Home Province Participation Rate	Full-Time Home Province Enrolment	Population 18-24	Home Province Participation Rate
1993-94	15029	80159	18.7%	21508	95474	22.5%	2105	13605	15.5%
2003-04	13550	70307	19.3%	21462	87437	24.5%	2463	13271	18.6%
2004-05	13807	70124	19.7%	21211	87923	24.1%	2572	13460	19.1%
2005-06	13923	68712	20.3%	20274	87433	23.2%	2549	13391	19.0%
2006-07	13306	67400	19.7%	19910	86795	22.9%	2542	13111	19.4%
2007-08	13080	66562	19.7%	19280	86300	22.3%	2411	13012	18.5%
2008-09	12740	66423	19.2%	18736	86660	21.6%	2435	13024	18.7%
2009-10	12668	66528	19.0%	18850	87481	21.5%	2566	13158	19.5%
2010-11	12648	66762	18.9%	18875	88228	21.4%	2581	13408	19.2%
2011-12	12510	66862	18.7%	18867	88587	21.3%	2629	13503	19.5%
2012-13	12204	66649	18.3%	18649	88575	21.1%	2555	13700	18.6%

Source: MPHEC PSIS database; Statistics Canada CANSIM Table 051-0001

TABLE 2: MARITIME PARTICIPATION OF RESIDENTS

Number of provincial residents enrolled full-time in any Maritime university divided by the provincial population aged 18-24.

What this Measure tells us: This definition provides the regional picture of the extent to which a provincial population accesses university education and the extent of its intra-regional mobility, as it encompasses the enrolment of provincial residents in all Maritime universities. Certain sub-populations may be more likely to seek education outside their province, such as for programs unavailable in their province, or French-language instruction. The numerator in this definition includes all full-time students. This is to enable comparisons with the National Participation of Maritimers, where age group is not universally available for the source used for the Canadian statistics.

	New Brunswick Residents			Nova Scotia Residents			Prince Edward Island Residents		
	Full-Time Enrolment NB residents in Maritime universities	Population 18-24	Maritime Participation Rate of Residents	Full-Time Enrolment NS residents in Maritime universities	Population 18-24	Maritime Participation Rate of Residents	Full Time Enrolment PE residents in Maritime universities	Population 18-24	Maritime Participation Rate of Residents
1993-94	17341	80159	21.6%	23082	95474	24.2%	3158	13605	23.2%
2003-04	16049	70307	22.8%	23537	87437	26.9%	3715	13271	28.0%
2004-05	16312	70124	23.3%	23216	87923	26.4%	3847	13460	28.6%
2005-06	16410	68712	23.9%	22253	87433	25.5%	3759	13391	28.1%
2006-07	15788	67400	23.4%	21759	86795	25.1%	3788	13111	28.9%
2007-08	15446	66562	23.2%	21098	86300	24.4%	3642	13012	28.0%
2008-09	15071	66423	22.7%	20487	86660	23.6%	3649	13024	28.0%
2009-10	15003	66528	22.6%	20558	87481	23.5%	3727	13158	28.3%
2010-11	15034	66762	22.5%	20590	88228	23.3%	3778	13408	28.2%
2011-12	14856	66862	22.2%	20605	88587	23.3%	3835	13503	28.4%
2012-13	14562	66649	21.8%	20362	88575	23.0%	3710	13700	27.1%

Source: MPHEC PSIS database; Statistics Canada CANSIM Table 051-0001.

TABLE 3: NATIONAL PARTICIPATION OF MARITIMERS

Number of provincial residents enrolled full-time in a Canadian university divided by the provincial population aged 18-24.

What this Measure tells us: This definition provides the most student-centered measure of participation as it encompasses enrolment of provincial residents in all Canadian universities. This measure, which illustrates the tendency of a province's typical university-aged residents to engage in university education, is the best measure to describe the demand for / access to university education by the population in question as it eliminates any limits imposed by the choices available in the home province or region. The numerator in this definition includes all full-time students, not just the 18-24 cohort as this age group is not universally available for the sources used for the Canadian statistics.

	New Brunswick Residents			Nova Scotia Residents			Prince Edward Island Residents			Canadian Residents		
	Full-Time Enrolment of NB Residents in Canadian Universities	Population 18-24	National Participation Rate of NB Residents	Full-Time Enrolment of NS Residents in Canadian Universities	Population 18-24	National Participation Rate of NS Residents	Full-Time Enrolment of PE Residents in Canadian Universities	Population 18-24	National Participation Rate of PE Residents	Full-Time Enrolment of Canadian Students in Canadian Universities	Canada Population 18-24	National Participation Rate
1993-94	19158	80159	23.9%	24057	95474	25.2%	3414	13605	25.1%	544500	2821462	19.3%
2003-04	18483	70307	26.3%	26139	87437	29.9%	4098	13271	30.9%	679422	3050114	22.3%
2004-05	18225	70124	26.0%	25443	87923	28.9%	4212	13460	31.3%	694716	3086837	22.5%
2005-06	18570	68712	27.0%	24426	87433	27.9%	4143	13391	30.9%	712083	3104218	22.9%
2006-07	18009	67400	26.7%	24750	86795	28.5%	4227	13111	32.2%	723006	3118820	23.2%
2007-08	17655	66562	26.5%	25071	86300	29.1%	4047	13012	31.1%	725085	3144484	23.1%
2008-09	17421	66423	26.2%	23991	86660	27.7%	4068	13024	31.2%	755463	3180582	23.8%
2009-10	17472	66528	26.3%	24084	87481	27.5%	4248	13158	32.3%	800166	3219355	24.9%
2010-11	17493	66762	26.2%	24147	88228	27.4%	4296	13408	32.0%	823077	3252235	25.3%
2011-12	17343	66862	25.9%	23817	88587	26.9%	4371	13503	32.4%	839592	3279835	25.6%

Source: *Enrolment data:* Statistics Canada PSIS 1993-94 to 2011-12; *Population data:* Statistics Canada CANSIM Table 051-0001.

TABLE 4: HOME PROVINCE 18-24 PARTICIPATION

Number of students aged 18-24 enrolled full-time in their home province divided by the provincial population aged 18-24.

What this Measure tells us: This measure provides insight into the demand for education in a province's universities by its typical university-aged population. This definition includes only full-time students aged 18-24 (as of December 31st) enrolled in their home province in the numerator.

	New Brunswick			Nova Scotia			Prince Edward Island		
	Full-Time 18-24 Home Province Enrolment	Population 18-24	Home Province 18-24 Participation Rate	Full-Time 18-24 Home Province Enrolment	Population 18-24	Home Province 18-24 Participation Rate	Full-Time 18-24 Home Province Enrolment	Population 18-24	Home Province 18-24 Participation Rate
1993-94	12844	80159	16.0%	17238	95474	18.1%	1811	13605	13.3%
2003-04	11295	70307	16.1%	17445	87437	20.0%	2104	13271	15.9%
2004-05	11489	70124	16.4%	17225	87923	19.6%	2197	13460	16.3%
2005-06	11581	68712	16.9%	16506	87433	18.9%	2143	13391	16.0%
2006-07	11122	67400	16.5%	16154	86795	18.6%	2147	13111	16.4%
2007-08	10917	66562	16.4%	15620	86300	18.1%	2023	13012	15.5%
2008-09	10700	66423	16.1%	15136	86660	17.5%	2066	13024	15.9%
2009-10	10673	66528	16.0%	15175	87481	17.3%	2130	13158	16.2%
2010-11	10655	66762	16.0%	15132	88228	17.2%	2150	13408	16.0%
2011-12	10639	66862	15.9%	15158	88587	17.1%	2146	13503	15.9%
2012-13	10434	66649	15.7%	14941	88575	16.9%	2068	13700	15.1%

Source: MPHEC PSIS database; Statistics Canada CANSIM Table 051-0001.

TABLE 5: HOME PROVINCE 18-24 PARTICIPATION BY GENDER

Number of *students aged 18-24 enrolled full-time in their home province* divided by the provincial population aged 18-24, *by gender*.

What this Measure tells us: This table shows the Home Province 18-24 Participation Rate, with an additional breakdown by gender. There have been considerable increases in female participation in universities since the early 1980s, and this has led to a gender ratio of 3:2 (female to male) in university enrolments in the Maritimes.

	New Brunswick						Nova Scotia						Prince Edward Island					
	Full-Time 18-24 Home Province Enrolment		Population 18-24		Home Province Participation Rate by Gender		Full-Time 18-24 Home Province Enrolment		Population 18-24		Home Province Participation Rate by Gender		Full Time 18-24 Home Province Enrolment		Population 18-24		Home Province Participation Rate by Gender	
	Female	Male	Female	Male	Female	Male	Female	Male	Female	Male	Female	Male	Female	Male	Female	Male	Female	Male
1993-94	7179	5665	39088	41071	18.4%	13.8%	9521	7717	46829	48645	20.3%	15.9%	1005	806	6619	6986	15.2%	11.5%
2003-04	6821	4474	34222	36085	19.9%	12.4%	10305	7140	43760	43677	23.5%	16.3%	1284	820	6595	6676	19.5%	12.3%
2004-05	6987	4502	34126	35998	20.5%	12.5%	10153	7072	43907	44016	23.1%	16.1%	1310	887	6667	6793	19.6%	13.1%
2005-06	7039	4542	33429	35283	21.1%	12.9%	9777	6728	43740	43693	22.4%	15.4%	1317	826	6676	6715	19.7%	12.3%
2006-07	6766	4355	32813	34587	20.6%	12.6%	9619	6521	43407	43388	22.2%	15.0%	1322	825	6566	6545	20.1%	12.6%
2007-08	6596	4321	32356	34206	20.4%	12.6%	9298	6303	42889	43411	21.7%	14.5%	1246	777	6479	6533	19.2%	11.9%
2008-09	6536	4161	32116	34307	20.4%	12.1%	9043	6062	42780	43880	21.1%	13.8%	1266	800	6475	6549	19.6%	12.2%
2009-10	6480	4193	32063	34465	20.2%	12.2%	9026	6118	43001	44480	21.0%	13.8%	1297	833	6539	6619	19.8%	12.6%
2010-11	6506	4149	32089	34673	20.3%	12.0%	9110	6020	42989	45239	21.2%	13.3%	1269	881	6653	6755	19.1%	13.0%
2011-12	6397	4242	32049	34813	20.0%	12.2%	9163	5989	42862	45725	21.4%	13.1%	1267	879	6713	6790	18.9%	12.9%
2012-13	6279	4155	32078	34571	19.6%	12.0%	9020	5916	42710	45865	21.1%	12.9%	1253	815	6791	6909	18.5%	11.8%

Source: MPHEC PSIS database; Statistics Canada CANSIM Table 051-0001. Students with gender 'Not Reported' have been excluded.

TABLE 6: HOME PROVINCE PARTICIPATION BY AGE COHORT

Number of students aged *n* years enrolled full-time in their home province divided by the provincial population aged *n* years, 2003-2004.

What this Measure tells us: This definition provides more detailed information on the participation of individual age cohorts. This definition includes only students enrolled in their home province, and zeroing in on this sub-population gives an accurate account of the extent to which universities are serving students in their province.

2003-2004									
	New Brunswick			Nova Scotia			Prince Edward Island		
Age (n)	Full-Time Home Province Enrolment	Population	Home Province Participation Rate	Full-Time Home Province Enrolment	Population	Home Province Participation Rate	Full-Time Home Province Enrolment	Population	Home Province Participation Rate
17	22	10018	0.2%	50	12658	0.4%	25	2131	1.2%
18	2343	10148	23.1%	2951	12787	23.1%	460	2091	22.0%
19	2202	10304	21.4%	3625	12974	27.9%	423	1981	21.4%
20	2052	10308	19.9%	3327	12719	26.2%	376	1975	19.0%
21	1981	10135	19.5%	3001	12400	24.2%	345	1923	17.9%
22	1302	10151	12.8%	2166	12432	17.4%	234	1838	12.7%
23	848	9880	8.6%	1359	12342	11.0%	165	1725	9.6%
24	567	9381	6.0%	1016	11783	8.6%	101	1738	5.8%
25	336	9358	3.6%	633	11330	5.6%	58	1608	3.6%
26	286	9689	3.0%	510	11340	4.5%	54	1558	3.5%
27	232	9527	2.4%	424	11467	3.7%	31	1547	2.0%
28	165	9504	1.7%	312	11451	2.7%	24	1595	1.5%
29	130	9620	1.4%	255	11456	2.2%	24	1672	1.4%

Source: MPHEC PSIS database; Statistics Canada CANSIM Table 051-0001.

TABLE 6: HOME PROVINCE PARTICIPATION BY AGE COHORT (CONTINUED)

Number of *students aged n years enrolled full-time in their home province* divided by the provincial population aged *n* years, 2012-2013.

Age	2012-2013								
	New Brunswick			Nova Scotia			Prince Edward Island		
	Full-Time Home Province Enrolment	Population	Home Province Participation Rate	Full-Time Home Province Enrolment	Population	Home Province Participation Rate	Full-Time Home Province Enrolment	Population	Home Province Participation Rate
17	26	9044	0.3%	42	11273	0.4%	18	1944	0.9%
18	2216	9382	23.6%	2377	11695	20.3%	421	1936	21.7%
19	2110	9648	21.9%	3101	12225	25.4%	387	1974	19.6%
20	1877	9677	19.4%	2761	12593	21.9%	389	2071	18.8%
21	1940	9910	19.6%	2606	13463	19.4%	365	2092	17.4%
22	1245	9752	12.8%	1927	13493	14.3%	255	2047	12.5%
23	620	9278	6.7%	1315	12926	10.2%	157	1877	8.4%
24	426	9002	4.7%	854	12180	7.0%	94	1703	5.5%
25	301	8852	3.4%	644	11993	5.4%	73	1719	4.2%
26	222	8910	2.5%	491	11708	4.2%	57	1625	3.5%
27	166	8882	1.9%	386	11526	3.3%	42	1576	2.7%
28	119	9015	1.3%	278	11300	2.5%	32	1574	2.0%
29	123	9259	1.3%	227	11341	2.0%	30	1558	1.9%

Source: MPHEC PSIS database; Statistics Canada CANSIM Table 051-0001.

TABLE 7: DIRECT ENTRY RATE OF RESIDENT HIGH SCHOOL STUDENTS

Number of *first-year direct entry* (determined by proxy: age \leq 18 years as of Dec. 31st) *full-time students* in year *n* divided by the number of high school graduates aged 18 or less in year *n-1*.

What this Measure tells us: This measure illustrates the rate of home province enrolment direct from high school, which is the traditional source of new recruitment for institutions. It is this group that is affected by the predicted demographic declines. This definition uses a proxy (age \leq 18 years as of Dec. 31st) to designate first-year, direct (from high school) entry students.

	New Brunswick			Nova Scotia			Prince Edward Island		
	First-year Direct Entry of NB Residents	High School Graduates Previous Year	Direct Entry Rate of Resident HS Students	First-year Direct Entry of NS Residents	High School Graduates Previous Year	Direct Entry Rate of Resident HS Students	First-year Direct Entry of PE Residents	High School Graduates Previous Year	Direct Entry Rate of Resident HS Students
2003-04	2365	8292	28.5%	3001	10350	29.0%	485	1752	27.7%
2004-05	2360	7995	29.5%	2827	10446	27.1%	471	1734	27.2%
2005-06	2344	8199	28.6%	2718	10362	26.2%	471	1695	27.8%
2006-07	2212	8301	26.6%	2611	10242	25.5%	471	1734	27.2%
2007-08	2249	7977	28.2%	2556	10371	24.6%	467	1746	26.7%
2008-09	2328	8028	29.0%	2543	10500	24.2%	485	1773	27.4%
2009-10	2360	8094	29.2%	2448	10239	23.9%	467	1764	26.5%
2010-11	2246	8250	27.2%	2493	10161	24.5%	474	1740	27.2%
2011-12	2280	7851	29.0%	2554	10101	25.3%	453	1728	26.2%
2012-13	2242	7797	28.8%	2419	9789	24.7%	439	1644	26.7%

Source: *Enrolments*: MPHEC PSIS database; *High school graduates*: Statistics Canada CANSIM Table 477-0026 Number of public school graduates in regular programs for youth, by age group and sex, Canada, provinces and territories.

TABLE 8: OVERALL PARTICIPATION

Number of students enrolled full-time in a province, divided by the provincial population aged 18-24.

What this Measure tells us: This definition measures general student activity as a proportion of the typical university student-aged population in the province. It has been published historically by the Maritime Provinces Higher Education Commission (MPHEC) to enable comparison with Statistics Canada’s historical definition. This definition includes all full-time students enrolled regardless of age or geographic origin; because substantial proportions of students come from outside the region to study, the definition is not an accurate measure of the extent to which a province’s universities are accessed by its typical student-aged population, and should therefore be used with caution.

	New Brunswick			Nova Scotia			Prince Edward Island			Canada		
	Full-Time Enrolment	Population 18-24	Overall Participation Rate	Full-Time Enrolment	Population 18-24	Overall Participation Rate	Full-Time Enrolment	Population 18-24	Overall Participation Rate	Full-Time Enrolment	Population 18-24	Overall Participation Rate
1993-94	19364	80159	24.2%	30888	95474	32.4%	2691	13605	19.8%	574320	2821462	20.4%
2003-04	20053	70307	28.5%	35662	87437	40.8%	3246	13271	24.5%	738,150	3050114	24.2%
2004-05	20141	70124	28.7%	36074	87923	41.0%	3382	13460	25.1%	759030	3086837	24.6%
2005-06	20083	68712	29.2%	35550	87433	40.7%	3368	13391	25.2%	780414	3104218	25.1%
2006-07	19201	67400	28.5%	34800	86795	40.1%	3374	13111	25.7%	792630	3118820	25.4%
2007-08	18657	66562	28.0%	33599	86300	38.9%	3251	13012	25.0%	796314	3144484	25.3%
2008-09	18122	66423	27.3%	33273	86660	38.4%	3371	13024	25.9%	829386	3180582	26.1%
2009-10	18045	66528	27.1%	34078	87481	39.0%	3543	13158	26.9%	882546	3219355	27.4%
2010-11	18171	66762	27.2%	35207	88228	39.9%	3676	13408	27.4%	912309	3252235	28.1%
2011-12	18367	66862	27.5%	36098	88587	40.7%	3761	13503	27.9%	938718	3279835	28.6%
2012-13	18311	66649	27.5%	36616	88575	41.3%	3741	13700	27.3%	n/a	3330039	n/a

Source: Maritime enrolment data: MPHEC PSIS database; Canada enrolment data: Statistics Canada CANSIM Table 477-0019; Population data: Statistics Canada CANSIM Table 051-0001 (population estimates updated in November 2013).

TABLE 9: HOME PROVINCE FULL AND PART-TIME PARTICIPATION

Number of *students enrolled full or part-time in their home province* divided by the provincial population aged 18-24.

What this Measure tells us: This definition can provide insight into the extent a province's universities are accessed by the typical university aged population. This definition is different from the Home Province Participation Rate, however, in that it includes students enrolled either full or part-time in their home province. While most participation rates in the literature focus on full-time enrolments, this measure widens the scope to include part-time students as well.

	New Brunswick			Nova Scotia			Prince Edward Island		
	Full-Time or Part-Time Home Province Enrolment	Population 18-24	Full-Time or Part-Time Home Province Participation Rate	Full-Time or Part-Time Home Province Enrolment	Population 18-24	Full-Time or Part-Time Home Province Participation Rate	Full-Time or Part-Time Home Province Enrolment	Population 18-24	Full-Time or Part-Time Home Province Participation Rate
1993-94	20235	80159	25.2%	28809	95474	30.2%	2854	13605	21.0%
2003-04	17492	70307	24.9%	27430	87437	31.4%	2994	13271	22.6%
2004-05	17419	70124	24.8%	26855	87923	30.5%	3112	13460	23.1%
2005-06	17521	68712	25.5%	25615	87433	29.3%	3010	13391	22.5%
2006-07	16711	67400	24.8%	25260	86795	29.1%	3098	13111	23.6%
2007-08	16431	66562	24.7%	24470	86300	28.4%	2978	13012	22.9%
2008-09	16019	66423	24.1%	23822	86660	27.5%	3060	13024	23.5%
2009-10	15969	66528	24.0%	23907	87481	27.3%	3115	13158	23.7%
2010-11	15793	66762	23.7%	23579	88228	26.7%	3175	13408	23.7%
2011-12	15559	66862	23.3%	23364	88587	26.4%	3243	13503	24.0%
2012-13	15016	66649	22.5%	22942	88575	25.9%	3082	13700	22.5%

Source: MPHEC PSIS database; Statistics Canada CANSIM Table 051-0001.

TABLE 10: MARITIME FULL AND PART-TIME PARTICIPATION OF RESIDENTS

Number of provincial residents enrolled full or part-time in a Maritime university divided by the provincial population aged 18-24.

What this Measure tells us: Like the Maritime Participation of Residents definition on which this is based, this definition provides the regional picture of the extent university education is accessed by a provincial population and the extent of its intra-regional mobility, as it encompasses the enrolment of provincial residents in all Maritime universities. Certain subpopulations may be more likely to seek education outside their province, such as for programs unavailable in their province, or French-language instruction. Because both full and part-time students are included and because part-time students are more likely to be older (than 24), more students are added to the numerator which are outside the range of the denominator. Therefore, the rates are higher than in the Maritime Participation of Residents definition.

	New Brunswick			Nova Scotia			Prince Edward Island		
	Full-Time or Part-Time enrolment of NB Resident in Maritime Universities	Population 18-24	Maritime Full-Time and Part-Time Participation Rate of Residents	Full-Time or Part-Time enrolment of NS Resident in Maritime Universities	Population 18-24	Maritime Full-Time and Part-Time Participation Rate of Residents	Full-Time or Part-Time enrolment of PEI Resident in Maritime Universities	Population 18-24	Maritime Full-Time and Part-Time Participation Rate of Residents
1993-94	22694	80159	28.3%	30490	95474	31.9%	4086	13605	30.0%
2003-04	20256	70307	28.8%	29618	87437	33.9%	4475	13271	33.7%
2004-05	20192	70124	28.8%	28980	87923	33.0%	4613	13460	34.3%
2005-06	20308	68712	29.6%	27759	87433	31.7%	4475	13391	33.4%
2006-07	19503	67400	28.9%	27281	86795	31.4%	4569	13111	34.8%
2007-08	19066	66562	28.6%	26438	86300	30.6%	4415	13012	33.9%
2008-09	18670	66423	28.1%	25739	86660	29.7%	4467	13024	34.3%
2009-10	18581	66528	27.9%	25804	87481	29.5%	4487	13158	34.1%
2010-11	18460	66762	27.7%	25479	88228	28.9%	4565	13408	34.0%
2011-12	18180	66862	27.2%	25268	88587	28.5%	4683	13503	34.7%
2012-13	17685	66649	26.5%	24799	88575	28.0%	4491	13700	32.8%

Source: MPHEC PSIS database; Statistics Canada CANSIM Table 051-0001.

TABLE 11: OVERALL FULL AND PART-TIME PARTICIPATION

Number of students enrolled full or part-time divided by the provincial population aged 18-24.

What this Measure tells us: This measure is based on the Overall Participation Rate; the difference is that both full and part-time students are included in the numerator. The denominator, the population aged 18-24, remains the same. As with the Overall Participation Rate, this definition measures general student activity as a proportion of the typical university-aged student population in the province; with all full and part-time students included in the numerator, it is the most “generous” definition and thus records the highest participation rates. The same cautions noted for the Overall Participation Rate definition stand for this one: as the definition includes all students regardless of age or geographic origin, and substantial numbers come from outside the region to study, the definition is not an accurate measure of the extent to which a province’s universities are serving its typical student-aged population.

	New Brunswick			Nova Scotia			Prince Edward Island		
	Full-Time and Part-Time enrolment	Population 18-24	Overall Full Time and Part-Time Participation Rate	Full-Time and Part-Time enrolment	Population 18-24	Overall Full Time and Part-Time Participation Rate	Full-Time and Part-Time enrolment	Population 18-24	Overall Full Time and Part-Time Participation Rate
1993-94	24918	80159	31.1%	38900	95474	40.7%	3467	13605	25.5%
2003-04	24715	70307	35.2%	44081	87437	50.4%	3843	13271	29.0%
2004-05	24552	70124	35.0%	44347	87923	50.4%	3992	13460	29.7%
2005-06	24501	68712	35.7%	43697	87433	50.0%	3888	13391	29.0%
2006-07	23353	67400	34.6%	42816	86795	49.3%	4008	13111	30.6%
2007-08	22825	66562	34.3%	41470	86300	48.1%	3921	13012	30.1%
2008-09	22231	66423	33.5%	41303	86660	47.7%	4131	13024	31.7%
2009-10	22226	66528	33.4%	42060	87481	48.1%	4232	13158	32.2%
2010-11	22255	66762	33.3%	42897	88228	48.6%	4415	13408	32.9%
2011-12	22246	66862	33.3%	43582	88587	49.2%	4500	13503	33.3%
2012-13	21981	66649	33.0%	44073	88575	49.8%	4385	13700	32.0%

Source: MPHEC PSIS database; Statistics Canada CANSIM Table 051-0001.