

# TRENDS

## IN MARITIME HIGHER EDUCATION

Volume 11 Number 1

-Annual Digest-

February 2014

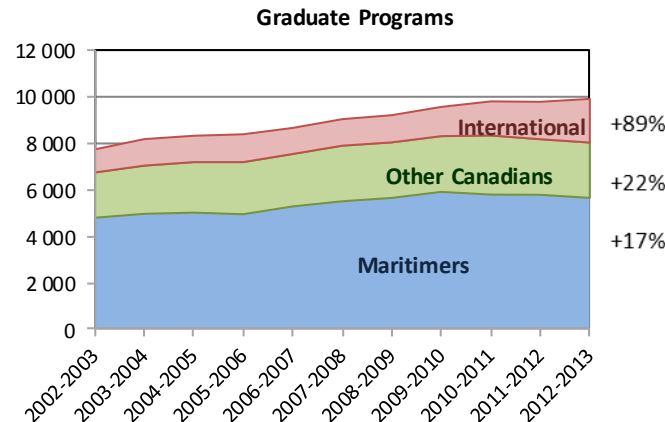
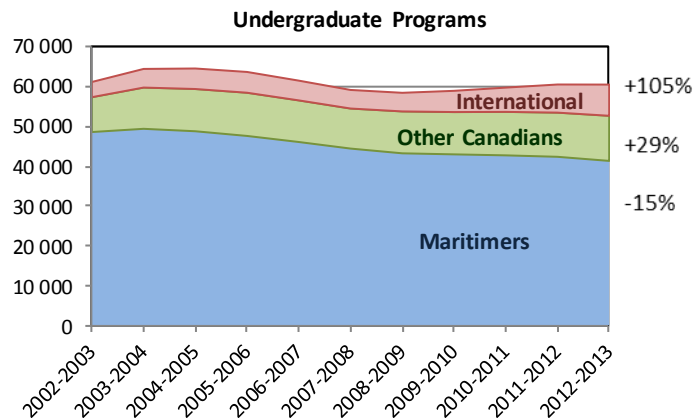
### UNIVERSITY ENROLMENT - 2012-2013

#### Highlights

- ⇒ In 2012-13, 70,433 students were enrolled in Maritime universities; Enrolments increased by 0.1% since 2011-12 and 2.2% since 2002-03.
- ⇒ 60,499 students were enrolled at the undergraduate level; There was no change from 2011-12, but a decrease of 1.1% in enrolment since 2002-03.
- ⇒ 9,934 students were enrolled at the graduate level; up 1.3% since 2011-12 and up 28% since 2002-03.
- ⇒ Over the last decade there has been a substantial shift in the make-up of student population. Between 2002-03 and 2012-13:
  - ◆ The number of students from the Maritimes decreased by 12%
  - ◆ The number of international students increased by 102%
  - ◆ The number of Canadian students from outside the Maritimes increased by 28%.
- ⇒ The three provinces show different enrolment trends over 10 years (since 2002-2003) and one year (since 2011-12).
  - ◆ In New Brunswick, the number of undergraduate students decreased by 12% over 10 years, and 1% over one year. At the graduate level the number of students increased by 33% over 10 years, but decreased by 2% over one year.
  - ◆ In Nova Scotia, the number of undergraduate students increased by 4% over 10 years, and 1% over one year. At the graduate level, the number of students increased 25% over 10 years, and 3% over one year.
  - ◆ In Prince Edward Island the number of undergraduate students increased by 20% over 10 years, but decrease 2.5% over one year. At the graduate level, the number of students increased by 92% over 10 years, but decreased by 4% over one year.

#### ENROLMENT BY PROGRAM TYPE AND STUDENT ORIGIN

Change in enrolment between 2002-2003 and 2012-2013



#### All Program Types Combined

International	+102%
Other Canadians	+28%
Maritimers	-12%

### How to read the tables

Enrolment statistics are reported at the provincial and Maritime-level for the 2012-13 fall term. The percent change over one, five and 10 years (change since 2011-12, 2007-08 and 2002-03 respectively) is provided to illustrate major trends. Below each summary table is the title of a corresponding table on the MPHEC website with a breakdown by university and/or other variables available at: <http://www.mphec.ca/research/maritimeuniversitystatistics/enrolment.aspx>.

#### TOTAL ENROLMENT

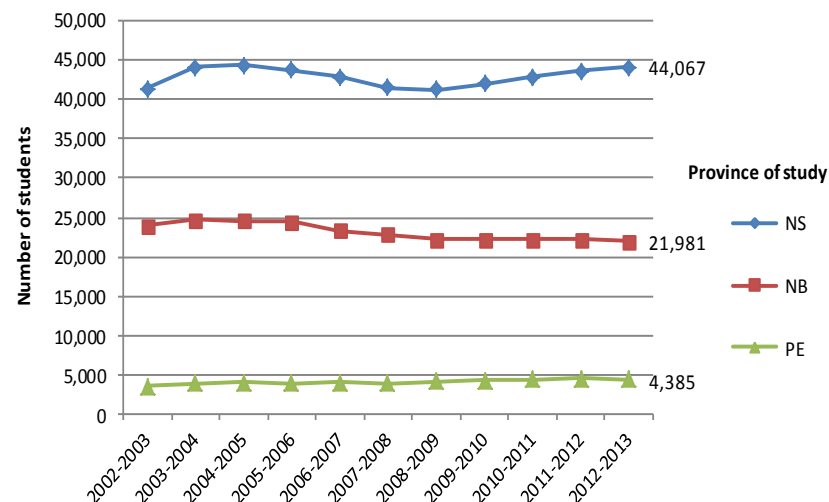


Table 1: Total Enrolment by Province, Institution, and Registration Status

FULL-TIME EQUIVALENTS (DECEMBER 1 <sup>ST</sup> )	FTE	Change over		
	2012-2013	1 year	5 years	10 years
New Brunswick	19,165.96	-0.4%	-1.8%	-5.1%
Nova Scotia	38,303.11	1.3%	8.3%	9.0%
Prince Edward Island	3,849.29	-0.8%	14.3%	26.0%
<b>Maritimes</b>	<b>61,318.36</b>	<b>0.6%</b>	<b>5.3%</b>	<b>5.0%</b>

Table 4: Total Full-Time Equivalent (FTE) as of December 1st, by Province, Institution, and Registration Status

TOTAL UNDERGRADUATE ENROLMENT		Enrolment 2012-2013	Change over		
			1 year	5 years	10 years
New Brunswick	<b>Total</b>	<b>19,429</b>	<b>-1.1%</b>	<b>-5.3%</b>	<b>-11.8%</b>
	Full-time	16,880	0.2%	-1.9%	-6.6%
	Part-time	2,549	-9.0%	-23.4%	-35.6%
Nova Scotia	<b>Total</b>	<b>37,002</b>	<b>0.8%</b>	<b>5.8%</b>	<b>3.6%</b>
	Full-time	32,328	0.8%	8.1%	6.7%
	Part-time	4,674	1.1%	-7.3%	-14.1%
Prince Edward Island	<b>Total</b>	<b>4,068</b>	<b>-2.5%</b>	<b>10.9%</b>	<b>19.9%</b>
	Full-time	3,450	-0.7%	11.1%	20.3%
	Part-time	618	-11.5%	9.8%	17.9%
Maritimes	<b>Total</b>	<b>60,499</b>	<b>0.0%</b>	<b>2.3%</b>	<b>-1.1%</b>
	Full-time	52,658	0.5%	4.8%	2.8%
	Part-time	7,841	-3.4%	-12.2%	-21.0%

Table 2: Total Undergraduate Enrolment by Province, Institution, and Registration Status

TOTAL GRADUATE ENROLMENT		Enrolment 2012-2013	Change over		
			1 year	5 years	10 years
New Brunswick	<b>Total</b>	<b>2,552</b>	<b>-2.0%</b>	<b>11.1%</b>	<b>33.2%</b>
	Full-time	1,431	-6.2%	-1.8%	15.9%
	Part-time	1,121	4.0%	33.3%	64.6%
Nova Scotia	<b>Total</b>	<b>7,065</b>	<b>2.7%</b>	<b>8.5%</b>	<b>24.5%</b>
	Full-time	4,279	6.6%	16.3%	46.5%
	Part-time	2,786	-2.7%	-1.5%	1.2%
Prince Edward Island	<b>Total</b>	<b>317</b>	<b>-3.6%</b>	<b>25.8%</b>	<b>92.1%</b>
	Full-time	291	1.0%	100.7%	268.4%
	Part-time	26	-36.6%	-75.7%	-69.8%
Maritimes	<b>Total</b>	<b>9,934</b>	<b>1.3%</b>	<b>9.7%</b>	<b>28.1%</b>
	Full-time	6,001	3.0%	13.6%	41.7%
	Part-time	3,933	-1.2%	4.1%	11.8%

Table 3: Total Graduate Enrolment by Province, Institution, and Registration Status

UNDERGRADUATE ENROLMENT BY STUDENT ORIGIN		Enrolment 2012-2013	Change over		
			1 year	5 years	10 years
<b>New Brunswick</b>		<b>19,429</b>	<b>-1.1%</b>	<b>-5.3%</b>	<b>-11.8%</b>
Home Province Residents <sup>1</sup>		13,519	-3.1%	-9.7%	-15.8%
Other Maritimers		1,947	-3.2%	-9.9%	-20.2%
Other Canadians		1,937	2.6%	-0.5%	-8.8%
International <sup>2</sup>		2,026	13.4%	39.5%	42.8%
<b>Nova Scotia</b>		<b>37,002</b>	<b>0.8%</b>	<b>5.8%</b>	<b>3.6%</b>
Home Province Residents <sup>1</sup>		19,788	-1.9%	-6.9%	-17.8%
Other Maritimers		2,714	-0.6%	-4.2%	-7.6%
Other Canadians		9,155	2.0%	16.0%	42.0%
International		5,345	10.8%	79.5%	135.8%
<b>Prince Edward Island</b>		<b>4,068</b>	<b>-2.5%</b>	<b>10.9%</b>	<b>19.9%</b>
Home Province Residents <sup>1</sup>		2,880	-4.8%	1.4%	8.0%
Other Maritimers		462	5.2%	33.5%	18.2%
Other Canadians		255	2.8%	6.7%	30.1%
International		471	2.8%	92.2%	241.3%
<b>Maritimes</b>		<b>60,499</b>	<b>0.0%</b>	<b>2.3%</b>	<b>-1.1%</b>
New Brunswick <sup>3</sup>		15,766	-2.5%	-8.5%	-14.5%
Nova Scotia <sup>3</sup>		21,520	-1.9%	-6.9%	-17.9%
Prince Edward Island <sup>3</sup>		4,024	-4.5%	-1.2%	2.2%
Other Canadians		11,347	2.1%	12.6%	29.5%
International <sup>2</sup>		7,842	10.9%	67.7%	105.1%

<sup>1</sup> Students enrolled within their permanent province of residence declared at admission; <sup>2</sup> Excludes students enrolled in offshore programs; <sup>3</sup> Provincial residents enrolled at all Maritime universities

Table 5: Enrolment of International Students by Province, Institution, Reg. Status, and % of Total; Table 7: Total Enrolment by Province, Immigration Status, Province of Origin, and Level of Study

ENROLMENT BY GENDER <sup>4</sup>		2012-2013	1 year	5 years	10 years
New Brunswick	Female	12,640	-1.4%	-5.9%	-10.9%
	Male	9,300	-1.1%	-0.9%	-4.8%
Nova Scotia	Female	25,364	0.0%	3.2%	3.6%
	Male	18,673	2.7%	10.8%	10.3%
Prince Edward Island	Female	2,775	-2.0%	10.8%	19.1%
	Male	1,610	-3.5%	13.7%	31.1%
Maritimes	Female	40,779	-0.6%	0.7%	-0.5%
	Male	29,583	1.1%	7.0%	5.9%

<sup>4</sup> Students with gender "not reported" are excluded

Table 8: Total Enrolment by Province, Institution, and Gender

Table 9: Total Enrolment by Province, Field of Study, and Gender

GRADUATE ENROLMENT BY STUDENT ORIGIN		Enrolment 2012-2013	Change over		
			1 year	5 years	10 years
<b>New Brunswick</b>		<b>2,552</b>	<b>-2.0%</b>	<b>11.1%</b>	<b>33.2%</b>
Home Province Residents <sup>1</sup>		1,497	-6.5%	2.3%	19.8%
Other Maritimers		146	-3.9%	12.3%	15.0%
Other Canadians		326	4.8%	12.4%	22.1%
International <sup>2</sup>		583	8.2%	40.5%	114.3%
<b>Nova Scotia</b>		<b>7,065</b>	<b>2.7%</b>	<b>8.5%</b>	<b>24.5%</b>
Home Province Residents <sup>1</sup>		3,149	-1.3%	-2.0%	7.1%
Other Maritimers		635	5.0%	16.5%	71.6%
Other Canadians		2,021	-1.0%	-1.3%	22.3%
International		1,260	21.4%	78.7%	77.7%
<b>Prince Edward Island</b>		<b>317</b>	<b>-3.6%</b>	<b>25.8%</b>	<b>92.1%</b>
Home Province Residents <sup>1</sup>		202	-6.9%	45.3%	108.2%
Other Maritimers		31	10.7%	24.0%	72.2%
Other Canadians		42	-8.7%	-34.4%	27.3%
International		42	10.5%	75.0%	147.1%
<b>Maritimes</b>		<b>9,934</b>	<b>1.3%</b>	<b>9.7%</b>	<b>28.1%</b>
New Brunswick <sup>3</sup>		1,919	-4.3%	4.6%	29.4%
Nova Scotia <sup>3</sup>		3,274	-1.4%	-1.8%	7.7%
Prince Edward Island <sup>3</sup>		467	-0.2%	35.8%	66.2%
Other Canadians		2,389	-0.4%	-0.5%	22.3%
International <sup>2</sup>		1,885	16.7%	64.8%	88.9%

<sup>5</sup> Students with age "not reported" are excluded

Table 10: Full-time Enrolment by Province, Institution, and Age Group

FULL-TIME ENROLMENT BY AGE GROUP <sup>5</sup>		2012-2013	1 year	5 years	10 years
New Brunswick	19 or younger	5,824	0.3%	3.3%	-6.5%
	20-24 years old	9,452	-0.1%	-2.7%	-4.3%
	25 or older	3,034	-2.3%	-7.6%	-3.3%
Nova Scotia	19 or younger	9,967	0.5%	6.8%	4.6%
	20-24 years old	19,278	1.3%	10.3%	13.1%
	25 or older	7,358	3.1%	8.6%	11.4%
Prince Edward Island	19 or younger	1,086	-2.7%	7.4%	18.4%
	20-24 years old	1,861	-1.8%	14.0%	24.0%
	25 or older	794	5.9%	31.5%	50.4%
Maritimes	19 or younger	16,877	0.2%	5.6%	1.2%
	20-24 years old	30,591	0.7%	6.1%	7.7%
	25 or older	11,186	1.8%	4.9%	8.9%

ENROLMENT BY MAJOR FIELD OF STUDY <sup>1</sup>	Enrolment 2012-2013	1 year	Change over 5 years	10 years
<b>New Brunswick</b>				
Arts or Science - General	4,553	-5.6%	-2.2%	-4.6%
Agricultural and Biological Sciences	958	1.7%	-2.1%	6.2%
Commerce and Administration	3,114	0.7%	2.2%	-10.4%
Education, Physical Education, Recreation and Leisure	2,331	-5.4%	-26.9%	-15.1%
Engineering and Applied Sciences	2,365	2.6%	10.2%	9.0%
Fine and Applied Arts	322	-4.2%	4.5%	-8.3%
Health Professions and Occupations	2,076	-1.9%	-1.2%	11.8%
Humanities and Related	1,208	-6.6%	-14.0%	-14.0%
Mathematics and Physical Sciences	991	12.7%	24.7%	-23.2%
Social Sciences and Related	2,650	3.7%	5.3%	-3.0%
Not applicable/Not reported	1,413	-1.8%	-16.0%	-37.3%
<b>Nova Scotia</b>				
Arts or Science - General	7,017	-2.9%	4.4%	-7.0%
Agricultural and Biological Sciences	3,341	2.7%	16.3%	25.4%
Commerce and Administration	8,523	6.1%	20.3%	24.8%
Education, Physical Education, Recreation and Leisure	3,954	-5.8%	-7.1%	3.2%
Engineering and Applied Sciences	2,818	6.3%	42.8%	40.3%
Fine and Applied Arts	1,154	-6.6%	-8.1%	-11.3%
Health Professions and Occupations	4,444	0.9%	10.9%	29.8%
Humanities and Related	2,642	-4.8%	-19.4%	-11.7%
Mathematics and Physical Sciences	1,936	6.6%	13.0%	-19.8%
Social Sciences and Related	6,308	4.3%	-0.5%	4.8%
Not applicable/Not reported	1,930	-0.8%	-2.2%	-18.9%
<b>Prince Edward Island</b>				
Arts or Science - General	951	0.2%	9.7%	1.6%
Agricultural and Biological Sciences	765	-1.2%	30.8%	39.1%
Commerce and Administration	770	-5.9%	10.3%	27.3%
Education, Physical Education, Recreation and Leisure	403	0.2%	10.1%	53.2%
Engineering and Applied Sciences	102	-1.9%	1.0%	13.3%
Fine and Applied Arts	41	5.1%	24.2%	24.2%
Health Professions and Occupations	295	1.7%	16.6%	43.9%
Humanities and Related	256	-3.0%	-11.4%	0.4%
Mathematics and Physical Sciences	183	-14.5%	0.5%	33.6%
Social Sciences and Related	421	5.8%	23.5%	74.7%
Not applicable/Not reported	198	-20.2%	-3.9%	-18.2%

<sup>1</sup> All levels of study combined. Major field of study definitions are available at: [http://www.mphec.ca/resources/MPHEC\\_FOS\\_EN.pdf](http://www.mphec.ca/resources/MPHEC_FOS_EN.pdf)

ENROLMENT BY MAJOR FIELD OF STUDY	Enrolment 2012-2013	1 year	Change over 5 years	10 years
<b>Maritimes</b>				
Arts or Science - General	12,521	-3.7%	2.3%	-5.5%
Agricultural and Biological Sciences	5,064	1.9%	14.1%	23.0%
Commerce and Administration	12,407	3.9%	14.6%	13.7%
Education, Physical Education, Recreation and Leisure	6,688	-5.3%	-14.4%	-2.2%
Engineering and Applied Sciences	5,285	4.5%	25.2%	23.9%
Fine and Applied Arts	1,517	-5.8%	-5.0%	-10.0%
Health Professions and Occupations	6,815	0.1%	7.1%	24.2%
Humanities and Related	4,106	-5.2%	-17.4%	-11.7%
Mathematics and Physical Sciences	3,110	6.9%	15.6%	-19.1%
Social Sciences and Related	9,379	4.2%	2.0%	4.3%
Not applicable/Not reported	3,541	-2.5%	-8.3%	-27.4%

Table 6: Total Enrolment by Province, Major Field of Study, and Level of Study

### Additional Resources

Ten standard tables and a Microsoft Excel database, with a breakdown by university and other variables, are available for download at: <http://www.mphec.ca/research/maritimeuniversitystatistics/enrolment.aspx>

University enrolments are obtained from the MPHEC postsecondary student information system (PSIS) database, which contains detailed information on demographics, programs and courses for all students enrolled in 15 publicly-funded Maritime universities.

For further information, please contact:

**Maritime Provinces Higher  
Education Commission**

**P.O. Box 6000**

**401-82 Westmorland Street**

**Fredericton, NB E3B 5H1**

**Telephone: (506) 453-2844**

**Fax: (506) 453-2106**

**E-mail: [mphec@mphec.ca](mailto:mphec@mphec.ca)**

**Web: [www.mphec.ca](http://www.mphec.ca)**

